



2017 Football Gameday and Tailgate Guidelines

tailgate.okstate.edu

Oklahoma State University
University Entity Tailgate Reservations for
Recognized Student Organizations • Academic Departments • Staff Departments



RESERVING TAILGATE SPACE

(University Entities Only)

For the purposes of tailgate reservations, University entities are defined as: Recognized Student Organizations, Academic Departments, and Staff Departments. These University entities have the opportunity to reserve space in a guaranteed location on a game-by-game and/or recurring basis. 25'x25' plats have been designated at the Old Central Lawn [see map] and International Mall [see map] and will be allocated on a lawns directly south of the Indoor Practice Facility [see map].

HOW TO RESERVE SPACE

Campus entities can request space online at <http://tailgate.okstate.edu> with a valid O-Key account - or by visiting Meeting & Conference Services in 179 Student Union. Once the request is submitted, and if approved, a tailgate permit will be issued via an email confirmation.

Any campus entity may request space; but department heads, deans, or student organization presidents should be the signature authority for his/her organization.

SETUP AND STAGING

Though your space will be reserved, no tailgates may be staged or setup on campus prior to 5:00 p.m. the Thursday before each Saturday game. Set up for a weekday game may commence after 5:00 p.m. on the day prior to gameday. All tailgating equipment should be removed from campus by Noon of the day following gameday except for a weekday game when removal of equipment will need to take place following the game that evening.

TENTS

Tents and similar coverings must be securely anchored. To avoid damaging underground irrigation systems and other utilities, ballasted weights with sandbags, water jugs, concreted buckets, etc. are strongly encouraged.

A 25'x25' plat will be held and defined by Thursday of a home gameday. Larger, commercial-type tents that cannot fit or be properly ballasted are prohibited from being used unless approved by Meeting & Conference Services and Facilities Management at least 2 weeks in advance. Authorized locators will paint colored lines designating utilities. Stakes must not be placed in those locations. The reservation permit must be available and visibly posted at the tailgate during the length of time the tent is in place. Failure to follow these guidelines will result in the tent being taken down at a cost to the tailgater and potential loss of future reservation privileges. Any damage to utilities as a result of not following this policy will also be the responsibility of the tailgater.

GRILLING

Fires must be contained within grills or other containers designed specifically for that purpose. Extinguish charcoal fires thoroughly before leaving them unattended. Place extinguished charcoal and ashes in designated containers. Do not dump ashes, hot coals, grease, or any hazardous materials on campus grounds, near or on trees and shrubs, in trash cans, in dumpsters, or into storm drains.

The heat from grilling has scalded the bark of several trees and will likely lead to their loss. This is very disappointing as many of these trees were planted years ago. Please help us preserve our trees by avoiding grilling directly under tree canopies and using extreme caution near trees. Grilling is NOT allowed on any parking decks within campus parking garages.

Any person damaging University property will be responsible for the cost of repairs, including damages from cooking grease and/or coals to grass or landscape plants as well as irrigation lines or University facilities.

Burn ban laws do apply to tailgating at all times. Violators of these laws will be subject to prosecution.

ALCOHOLIC BEVERAGES

The use of alcoholic beverages is at all times subject to the alcoholic beverage laws of the State of Oklahoma. Please drink responsibly. In accordance with the alcoholic beverage laws of the State of Oklahoma, individuals must be at least 21-years-old to purchase, possess, or consume alcoholic beverages.

Stillwater City Ordinance prohibits the possession of an open container of beer on Stillwater public property. Violators are subject to arrest and fine.

CORPORATE TAILGATES AND SOLICITATIONS

Corporate or commercially-sponsored tailgates are prohibited except in designated locations. Those who wish to organize and provide such sites should contact Cowboy Sports Properties (CSP) at (405) 744-3482. Companies may not hang company banners on tailgates unless approved through CSP. Companies are also prohibited from issuing free or sample products without being properly licensed by the University. If there are any questions please contact CSP at (405) 744-3482.

Solicitations, sales, or other commercial activities are not allowed on campus. Vendor spaces are available on gameday through CSP at (405) 744-3482.

GENERAL

Individuals, groups, and organizations holding or participating in tailgate parties are responsible for their own conduct and are expected to respect the rights of others and the entire University community.

The Student Union and other limited buildings will be open, but there is no entry allowed into academic buildings. All building doors are locked on the weekend and should not be tampered with or forced open. Violators will be subject to legal action.

Glass bottles are discouraged due to safety concerns with risk of broken glass and the difficulty of recycling glass in our region. Aluminum cans or plastic bottles are encouraged as they are safer and easier to recycle.

The SGA Sustainability Committee will be out in the POSSE parking lots handing out trash/recycle bags as well as collecting plastic bottles and aluminum cans. Dispose of any trash or other tailgating items properly. Trash cans, recycle bins and bags, coal and ash disposal cans are provided for your convenience.

Animals must be leashed at all times and should not be left unattended or secured to University property. Animals are not allowed inside Boone Pickens Stadium. Please clean up after your pets while on campus.

Oklahoma State University, OSU Athletics, the OSU Student Union, the University Police Department, and Parking and Transportation Services reserve the right to refuse service to anyone at any time. Inappropriate behavior will result in the permanent loss of all parking and tailgating privileges.

Oklahoma State University is not responsible or liable for accidents, damage, loss or theft of materials/items/ personal property on University property.

In case of emergency, call 911 or use the Orange Shield app on your mobile device. For non-emergencies, call the University Police at (405) 744-6524.





GENERAL UNIVERSITY TAILGATING INFORMATION

OSU's BEAUTIFUL CAMPUS

Under the OSU Landscaping Master Plan, the University has invested resources in landscaping and irrigation systems throughout campus. The results are evident. Alumni justifiably take pride in returning to our beautiful campus and enjoying the memories of days gone by. First-time visitors to our campus are uniformly impressed by the architecture, grounds, and landscaping.

The tailgating tradition at OSU has grown dramatically the past few years and is a great part of the gameday experience. As you take part in that tradition, we ask that you please help us maintain the campus buildings, grounds, and landscape which are not only beautiful and historical, but important investments for students, faculty, staff, and fans to enjoy. Inappropriate behavior affecting the safety of fellow fans, resulting in destruction of University property, facilities and/or grounds, or failing to adhere to these tailgating guidelines may result in the permanent loss of all tailgating privileges.

SETUP AND STAGING (UNIVERSITY ENTITIES SEE NEXT SECTION FOR ADDITIONAL OPTIONS)

Because we clean, mow, and otherwise maintain our entire campus and accommodate campus parking for students, faculty, and staff, no tailgates may be staged or setup on campus prior to 5:00 p.m. the Thursday before each Saturday game. Setup for a weekday game may commence after 5:00 p.m. on the day prior to gameday. All tailgating equipment should be removed from campus by noon of the day following gameday except for a weekday game when removal of equipment will need to take place following the game that evening. Tailgating items staged or placed prior to 5:00 p.m. on those days will be removed by the University and may be claimed by calling (405) 744-2844. Items not claimed may be disposed of by the University at its discretion.

Sites within POSSE parking areas may not be staged prior to the opening time for the lots. POSSE football parking lots open at 8:00 a.m. for games kicking off prior to 4:00 p.m. and noon for games kicking off after 4:00 p.m. Tailgaters are NOT allowed to occupy more than one parking space with tents or other objects unless additional passes are displayed on equipment. All sidewalks, drive lanes, and fire lanes must be secured and fully accessible at all times. Cords, generators, satellite dishes, etc. must be confined to allotted space and cannot stretch across drive lanes. Because of the damage that can be incurred by driving and/or pulling heavy vehicles and/or equipment over sprinkler heads, etc. we ask fans to use caution when maneuvering in and around grassy areas, unless otherwise posted.

Connecting to University property such as electrical plugs, communication or television cables, or the like is prohibited.

Only street-legal golf carts, ATVs, and Gators are permitted on public streets and parking lots on gamedays. All violators will be subject to being ticketed by law enforcement.

Do not remove or move barricades, barrels, or any other traffic control devices. All signs and instructions for lots must be obeyed.

SETUP AND STAGING – UNIVERSITY ENTITIES

Recognized Student Organizations, Academic Departments, and Staff Departments have the opportunity to reserve tailgating space on gamedays. For more information on how to reserve for your organization or department, visit <http://tailgate.okstate.edu>.

TENTS

Tents and similar coverings must be securely anchored. To avoid damaging underground irrigation systems and other utilities, ballasted weights with sandbags, water jugs, concreted buckets, etc. are strongly encouraged.

Please note, a new change regarding larger tents (10'X20' or larger) directed by OSU's updated Excavation Permit Procedure as guided by the Oklahoma Underground Facilities Damage Prevention Act. Larger commercial-type tents that cannot be properly ballasted are discouraged from being used. In the case where larger tents must be staked and ballasts are not an option, an OKIE Locate request is to be made no more than 10 days in advance and not less than 48 hours before the date of the event by calling 811 or visiting www.callokie.com. A separate OKIE request must be made for each tent setup. Authorized locators will paint colored lines designating utilities and stakes must not be placed in those locations. The OKIE excavation permit must be available and visibly posted at the large tent tailgate during the length of time the tent is in place. Failure to follow these guidelines will result in the tent being taken down at a cost to the tailgater and jeopardizing any future tailgating opportunities. Any damage to utilities as a result of not following this policy will also be the responsibility of the tailgater.

The full excavation permit guidelines can be found at: <http://utilities.okstate.edu/excavation-procedure>.

GRILLING

All fires must be contained within grills or other containers designed specifically for that purpose. Extinguish charcoal fires thoroughly before leaving them unattended. Place extinguished charcoal and ashes in designated containers. Do not dump ashes, hot coals, grease, or any hazardous materials on campus grounds, near or on trees and shrubs, in trash cans, in dumpsters, or into storm drains.

The heat from grilling has scalded the bark of several trees and will likely lead to their loss. This is very disappointing as many of these trees were planted years ago. Please help us preserve our trees by avoiding grilling directly under tree canopies and using extreme caution near trees. Grilling is NOT allowed on any parking decks within campus parking garages.

Any person damaging University property will be responsible for the cost of repairs, including damages from cooking grease and/or coals to grass or landscape plants as well as irrigation lines or University facilities. Burn ban laws do apply to tailgating at all times. Violators of these laws will be subject to prosecution.

ALCOHOLIC BEVERAGES

The use of alcoholic beverages is at all times subject to the alcoholic beverage laws of the State of Oklahoma. Please drink responsibly.

In accordance with the alcoholic beverage laws of the State of Oklahoma, individuals must be at least 21-years-old to purchase, possess or consume alcoholic beverages. Stillwater City Ordinance prohibits the possession of an open container of beer on Stillwater public property. Violators are subject to arrest and fine.

TOBACCO

OSU is a tobacco-free campus through state law and University policy. Smoking and the use of other tobacco products are prohibited.

CORPORATE TAILGATES AND SOLICITATIONS

Corporate or commercially-sponsored tailgates are prohibited except in designated locations. Those who wish to organize and provide such sites should contact Cowboy Sports Properties (CSP) at (405) 744-3482. Companies may not hang company banners on tailgates unless approved through CSP. Companies are also prohibited from issuing free or sample products without being properly licensed by the University. If there are any questions please contact CSP at (405) 744-3482.

Solicitations, sales, or other commercial activities are not allowed on campus. Vendor spaces are available on gameday through CSP at (405) 744-3482.

GENERAL

Individuals, groups, and organizations holding or participating in tailgate parties are responsible for their own conduct and are expected to respect the rights of others and the entire University community.

There is no entry allowed into university buildings. All building doors are locked on the weekend and should not be tampered with or forced open. Violators will be subject to legal action.

Glass bottles are discouraged due to safety concerns with risk of broken glass and the difficulty of recycling glass in our region. Aluminum cans or plastic bottles are encouraged as they are safer and easier to recycle.

The SGA Sustainability Committee will be out in the POSSE parking lots handing out trash/recycle bags as well as collecting plastic bottles and aluminum cans. Dispose of any trash or other tailgating items properly. Trash cans, recycle bins and bags, coal and ash disposal cans are provided for your convenience.

Animals must be leashed at all times and should not be left unattended or secured to University property. Animals are not allowed inside Boone Pickens Stadium. Please clean up after your pets while on campus.

Oklahoma State University, OSU Athletics, the OSU Student Union, the University Police Department, and Parking and Transportation Services reserve the right to refuse service to anyone at any time. Inappropriate behavior will result in the permanent loss of all parking and tailgating privileges.

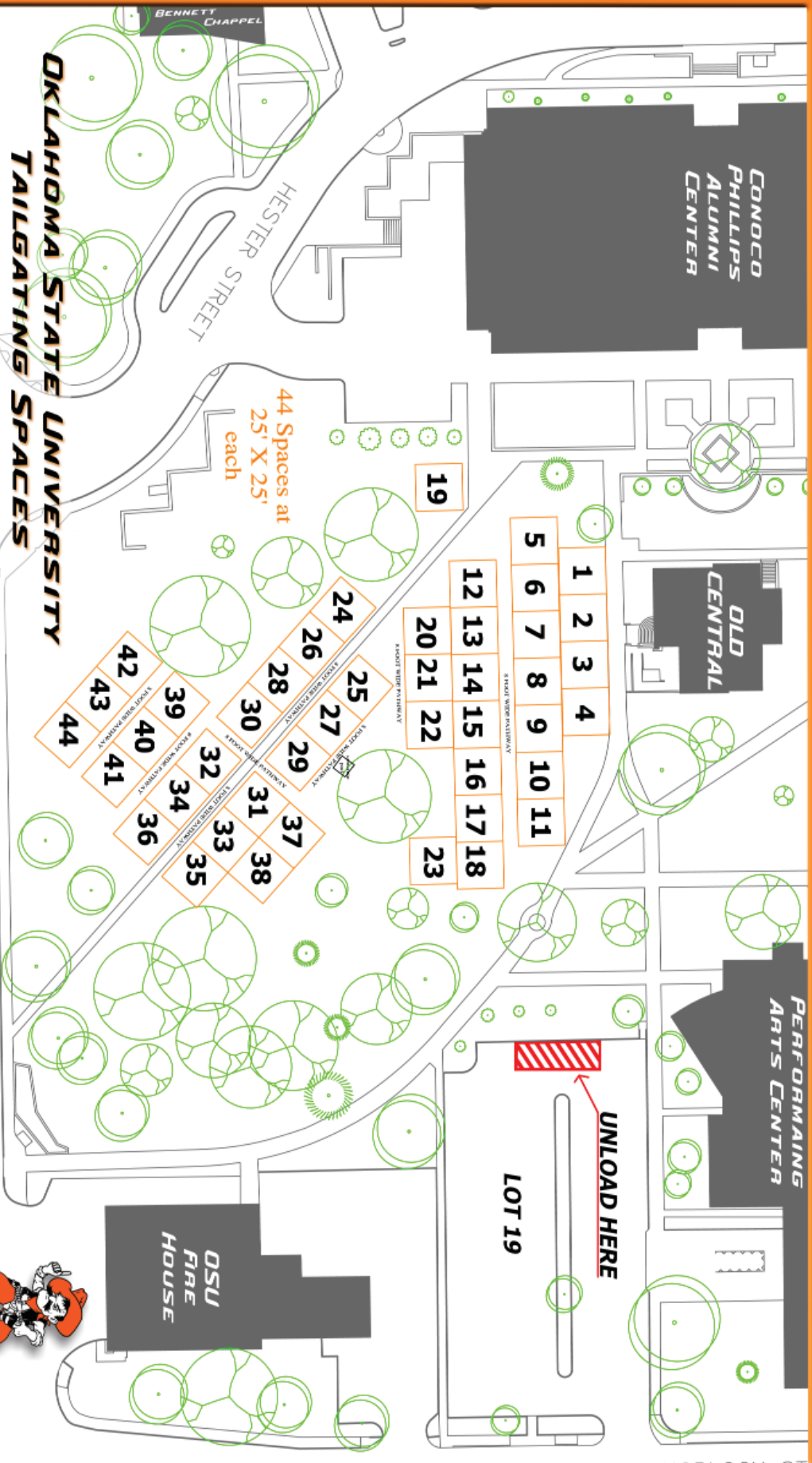
Oklahoma State University is not responsible or liable for accidents, damage, loss, or theft of materials/items/ personal property on University property.

In case of emergency, call 911 or use the Orange Shield app on your mobile device. For non-emergencies, call the University Police at (405) 744-6524.



**OKLAHOMA STATE UNIVERSITY
FOR
TAILGATING SPACES
OLD CENTRAL**

UNIVERSITY AVENUE



44 Spaces at
25' X 25'
each

UNLOAD HERE

LOT 19

CONOCO
PHILLIPS
ALUMNI
CENTER

OLD
CENTRAL

PERFORMING
ARTS CENTER

OSU
FIRE
HOUSE

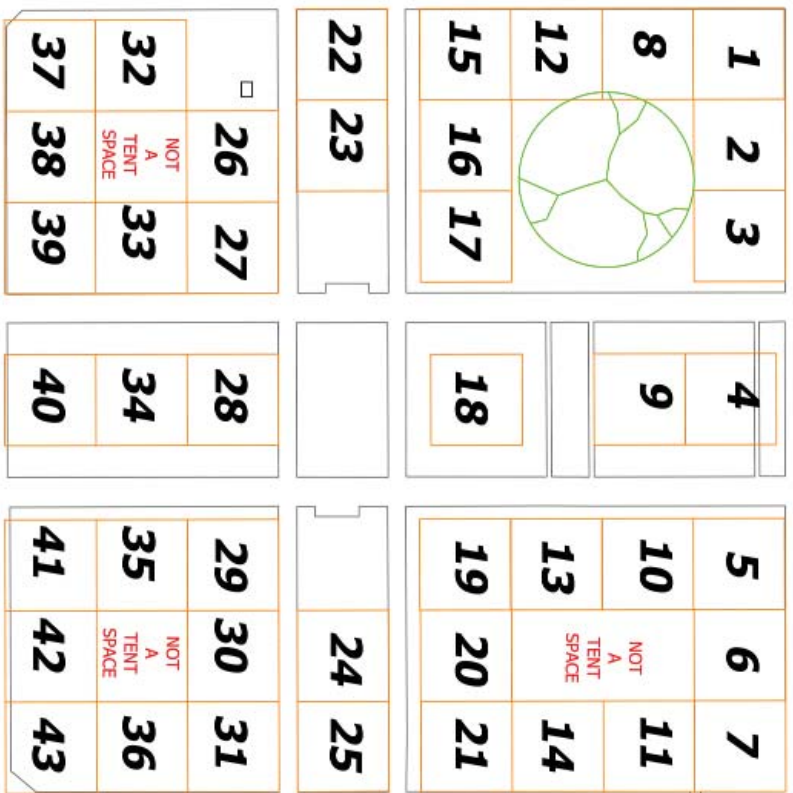
HESTER STREET

BENNETT
CHAPEL

NORTH

**OKLAHOMA STATE UNIVERSITY
TAILGATING SPACES
FOR
INTERNATIONAL MALL**

All Tent Spaces are 25' x 25'



43 Tent Spaces
25' x 25' each





OKLAHOMA STATE UNIVERSITY
TALGATING SPACES
INDOOR / OUTDOOR PRACTICE

	-10	-20	-30	-40	40'	30'	20'	10'	
1	2	3	4	5	6	7	8	9	10
11	12	13	14	15	16	17	18	19	20
21	22	23	24	25	26	27	28	29	30
31	32	33	34	35	36				

All Spaces are 25' x 25'

OKLAHOMA STATE

HALL OF FAME AVENUE

BOONE PICKENS STADIUM

